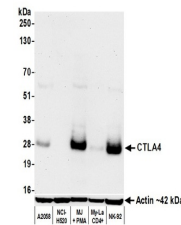


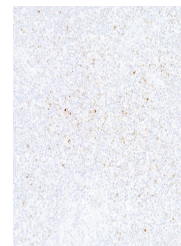
Product Datasheet

CTLA4 Antibody (orb1784582)

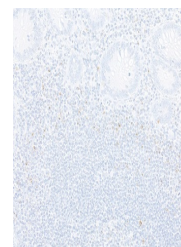
Description	CTLA4 Antibody
Species/Host	Rabbit
Reactivity	Human
Conjugation	Unconjugated
Tested Applications	IF, IHC, WB
Immunogen	Between 173 and C-terminus
Target	CTLA4
Preservatives	Borate Buffered Saline (BBS) pH 8.2 with 0.1% rAlbumin and 0.09% Sodium Azide
Form/Appearance	Whole IgG
Concentration	100 µg/ml
Storage	Shelf life: 1 year from date of receipt. Storage: 2 - 8°C
Note	For research use only
Application notes	Format: Whole IgG
Clonality	Recombinant
Uniprot ID	P16410
Dilution Range	WB: 1:1000, IHC: 1:100 to 1:500. Epitope retrieval with citrate buffer pH 6.0 is recommended for FFPE tissue sections
Expiration Date	12 months from date of receipt.



Detection of human CTLA4 by western blot...



Detection of human CTLA4 by immunohistoc...



Detection of human CTLA4 by immunohistoc...