

---

## Product Datasheet

### Glucagon Antibody (orb1784557)

**Description**

Glucagon Antibody

**Species/Host**

Rabbit

**Reactivity**

Human

**Conjugation**

Unconjugated

**Tested**

ELISA, IF, IHC, WB

**Applications**
**Immunogen**

Glucagon antibody was prepared from whole rabbit serum produced by repeated immunizations with a synthetic peptide corresponding to an internal portion of human Glucagon.

**Preservatives**

Preservative: 0.01% (w/v) Sodium Azide. Stabilizer: None. 0.02 M Potassium Phosphate, 0.15 M Sodium Chloride, pH 7.2

**Form/Appearance**

Liquid (sterile filtered)

**Concentration**

1.18 mg/mL

**Storage**

Store vial at -20° C prior to opening. Aliquot contents and freeze at -20° C or below for extended storage. Avoid cycles of freezing and thawing. Centrifuge product if not completely clear after standing at room temperature. This product is stable for several weeks at 4° C as an undiluted liquid. Dilute only prior to immediate use.

**Note**

For research use only

**Application notes**

Anti-Glucagon is tested in ELISA, IF, and Western Blot. Although not tested, this antibody is suitable in immunohistochemistry. Expect a band approximately ~20.9 kDa corresponding to the appropriate cell lysate or extract. Specific conditions for reactivity should be optimized by the end user

**Clonality**

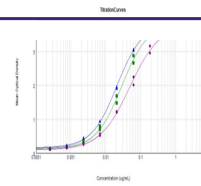
Polyclonal

**Purity**

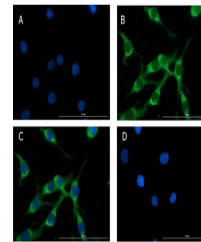
This affinity purified antibody is directed against human Glucagon. This product was affinity purified from monospecific antiserum by immunoaffinity purification. A BLAST analysis was used to suggest cross-reactivity with the antigen based on 100% homology with the immunizing sequence to human, chimpanzee, and bonobo.

**Uniprot ID**
[P01275](#)
**NCBI**
[NP\\_002045.1](#)
**Dilution Range**

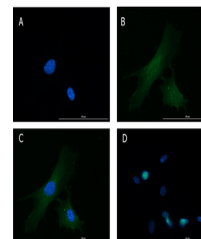
ELISA: 1:24,800-1:44,800, IHC: User Optimized, WB:



ELISA Results of Rabbit Anti-Glucagon An...



Immunofluorescence of Rabbit Anti-Glucag...



Immunofluorescence of Rabbit Anti-Glucag...