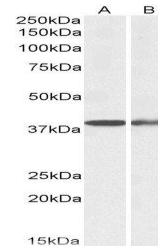


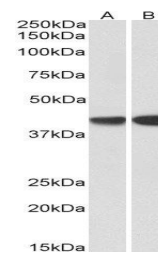
Product Datasheet

CAPG antibody (orb178391)

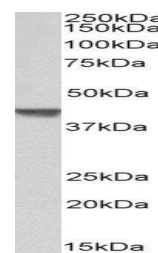
Description	Goat polyclonal antibody to CAPG.
Species/Host	Goat
Reactivity	Canine, Human, Porcine
Conjugation	Unconjugated
Tested Applications	ELISA, WB
Target	CAPG (aa205-217)
Preservatives	Supplied at 0.5 mg/ml in Tris saline, 0.02% sodium azide, pH 7.3 with 0.5% bovine serum albumin. Aliquot and store at -20°C. Minimize freezing and thawing.
Storage	Aliquot and store at -20°C. Minimize freezing and thawing.
Note	For research use only
Application notes	WB: Approx 38kDa band observed in lysates of cell line U937 and of Human, Mouse and Rat Spleen (calculated MW of 38.5kDa according to NP_001738.2). In Peripheral Blood Lymphocytes, the observed band runs as ~40kDa. Recommended concentration: 0.1-0.3µg/ml.
Protein Sequence	KAQVEIVTDGEEP
Clonality	Polyclonal
MW	38.5; 36.9
Entrez	822
Dilution Range	ELISA: 1:128000, WB: 0.1-0.3 µg/ml
Expiration Date	12 months from date of receipt.



Western blot analysis of taining of Mous...



Western blot analysis of taining of Peri...



Western blot analysis of taining of Pig ...