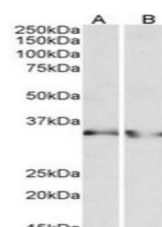


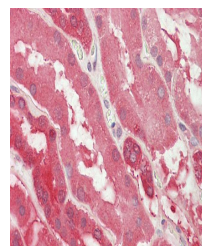
## Product Datasheet

### LDHB antibody (orb178383)

<b>Description</b>	Goat polyclonal antibody to LDHB.
<b>Species/Host</b>	Goat
<b>Reactivity</b>	Human
<b>Conjugation</b>	Unconjugated
<b>Tested Applications</b>	ELISA, IHC, WB
<b>Target</b>	LDHB (aa15-25)
<b>Preservatives</b>	Supplied at 0.5 mg/ml in Tris saline, 0.02% sodium azide, pH 7.3 with 0.5% bovine serum albumin. Aliquot and store at -20°C. Minimize freezing and thawing.
<b>Storage</b>	Aliquot and store at -20°C. Minimize freezing and thawing.
<b>Note</b>	For research use only
<b>Application notes</b>	WB: Approx 35kDa band observed in Human Heart and Kidney lysates (calculated MW of 36.6kDa according to NP_002291.1). Recommended concentration: 0.3-1µg/ml. IHC: Paraffin embedded Human Kidney. Recommended concentration: 5µg/ml.
<b>Protein Sequence</b>	EEATVPNNKIT
<b>Clonality</b>	Polyclonal
<b>MW</b>	36.6
<b>Entrez</b>	<a href="#">3945</a>
<b>Dilution Range</b>	ELISA: 1:4000, WB: 0.3-1 µg/ml, IHC-P: 5 µg/ml
<b>Expiration Date</b>	12 months from date of receipt.



Western blot analysis of Human Heart (La...



Immunohistochemical staining of Human Ki...