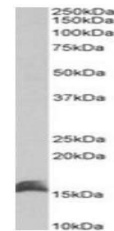


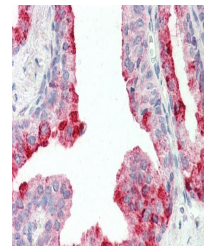
Product Datasheet

CutA protein antibody (orb176713)

Description	Goat polyclonal antibody to CutA protein.
Species/Host	Goat
Reactivity	Human
Conjugation	Unconjugated
Tested Applications	ELISA, IHC, WB
Target	CutA protein
Preservatives	Supplied at 0.5 mg/ml in Tris saline, 0.02% sodium azide, pH 7.3 with 0.5% bovine serum albumin. Aliquot and store at -20°C. Minimize freezing and thawing.
Storage	Aliquot and store at -20°C. Minimize freezing and thawing.
Note	For research use only
Application notes	WB: Approx 16kDa band observed in lysates of cell line Kelly (calculated MW of 16.8kDa according to NP_057005.1). Recommended concentration: 1-3µg/ml. Primary incubation was 1 hour.. IHC: Paraffin embedded Human Prostate. Recommended concentration: 5µg/ml.
Protein Sequence	QVTESVSDSIT
Clonality	Polyclonal
MW	20.9; 16.8; 19.1
Entrez	51596
Dilution Range	ELISA: 1:64000, WB: 1-3 µg/ml, IHC-P: 5 µg/ml
Expiration Date	12 months from date of receipt.



Western blot analysis of Kelly lysate us...



Immunohistochemical staining of Human Pr...