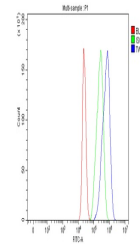


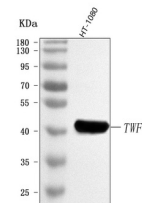
Product Datasheet

Anti-TWF1 Antibody (orb1743940)

| | |
|----------------------------|---|
| Description | Anti-TWF1 Antibody |
| Species/Host | Rabbit |
| Reactivity | Human |
| Conjugation | Unconjugated |
| Tested Applications | ELISA, FC, WB |
| Immunogen | E.coli-derived human TWF1 recombinant protein (Position: H116-D350). |
| Form/Appearance | Lyophilized |
| Concentration | Adding 0.2 ml of distilled water will yield a concentration of 500 µg/ml. |
| Storage | At -20°C for one year from date of receipt. After reconstitution, at 4°C for one month. It can also be aliquotted and stored frozen at -20°C for six months. Avoid repeated freezing and thawing. |
| Note | For research use only |
| Application notes | Western blot, 0.25-0.5 µg/ml, Human Flow Cytometry (Fixed), 1-3 µg /1x10 ⁶ cells, Human Direct ELISA, 0.1-0.5 µg/ml, Human. Adding 0.2 ml of distilled water will yield a concentration of 500 µg/ml |
| Isotype | Rabbit IgG |
| Clonality | Polyclonal |
| MW | 42 kDa |
| Uniprot ID | Q12792 |
| Expiration Date | 12 months from date of receipt. |



Flow Cytometry analysis of MCF-7 cells u...



WB analysis of TWF1 using anti-TWF1 anti...