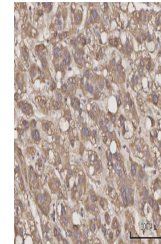


Product Datasheet

Anti-CCL23 Antibody (orb1743875)

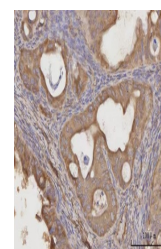
Description	Anti-CCL23 Antibody
Species/Host	Rabbit
Reactivity	Human
Conjugation	Unconjugated
Tested Applications	ELISA, IHC
Immunogen	E.coli-derived human CCL23 recombinant protein (Position: R22-N120).
Form/Appearance	Lyophilized
Concentration	Adding 0.2 ml of distilled water will yield a concentration of 500 µg/ml.
Storage	At -20°C for one year from date of receipt. After reconstitution, at 4°C for one month. It can also be aliquotted and stored frozen at -20°C for six months. Avoid repeated freezing and thawing.
Note	For research use only
Application notes	Immunohistochemistry(Paraffin-embedded Section), 2-5 µg/ml, Human Direct ELISA, 0.1-0.5 µg/ml, Human. Tested Species: In-house tested species with positive results. Other applications have not been tested. Optimal dilutions should be determined by end users. Adding 0.2 ml of distilled water will yield a concentration of 500 µg/ml
Clonality	Polyclonal
Uniprot ID	P55773
Expiration Date	12 months from date of receipt.



IHC analysis of CCL23 using anti-CCL23 a...



IHC analysis of CCL23 using anti-CCL23 a...



IHC analysis of CCL23 using anti-CCL23 a...