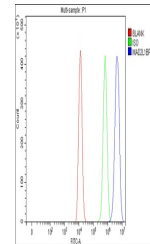


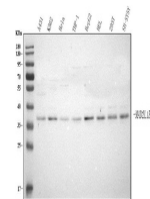
Product Datasheet

Anti-MAD2L1BP Antibody (orb1743767)

Description	Anti-MAD2L1BP Antibody
Species/Host	Rabbit
Reactivity	Human
Conjugation	Unconjugated
Tested Applications	ELISA, FC, WB
Immunogen	E.coli-derived human MAD2L1BP recombinant protein (Position: Y20-E274).
Form/Appearance	Lyophilized
Concentration	Adding 0.2 ml of distilled water will yield a concentration of 500 µg/ml.
Storage	At -20°C for one year from date of receipt. After reconstitution, at 4°C for one month. It can also be aliquotted and stored frozen at -20°C for six months. Avoid repeated freezing and thawing.
Note	For research use only
Application notes	Western blot, 0.25-0.5 µg/ml, Human Flow Cytometry (Fixed), 1-3 µg/1x10 ⁶ cells, Human Direct ELISA, 0.1-0.5 µg/ml, Human. Tested Species: In-house tested species with positive results. Other applications have not been tested. Optimal dilutions should be determined by end users. Adding 0.2 ml of distilled water will yield a concentration of 500 µg/ml
Clonality	Polyclonal
MW	37 kDa
Uniprot ID	Q15013
Expiration Date	12 months from date of receipt.



Flow Cytometry analysis of HEL cells using anti-MAD2L1BP antibody.



Western blot analysis of MAD2L1BP using anti-MAD2L1BP antibody.