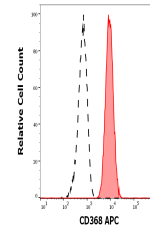


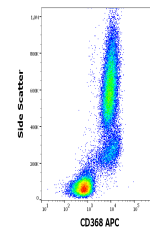
## Product Datasheet

### CD368 Antibody (APC) (orb1742784)

<b>Description</b>	CD368 is an approximately 25-30 kDa C-type lectin, which serves as one of pattern recognition recept...
<b>Reactivity</b>	Human, Primate
<b>Conjugation</b>	APC
<b>Tested Applications</b>	FC
<b>Immunogen</b>	CD368 ectodomain fused with human Fc
<b>Target</b>	CD368
<b>Preservatives</b>	Stabilizing phosphate buffered saline (PBS), pH 7.4, 15 mM sodium azide
<b>Storage</b>	Store at 2-8°C. Protect from prolonged exposure to light. Do not freeze.
<b>Note</b>	For research use only
<b>Application notes</b>	Flow cytometry: The reagent is designed for analysis of human blood cells using 10 µl reagent / 100 µl of whole blood or 106 cells in a suspension. The content of a vial (1 ml) is sufficient for 100 tests.
<b>Isotype</b>	Mouse IgG2b kappa
<b>Clonality</b>	Monoclonal
<b>Uniprot ID</b>	<a href="#">Q8WXI8</a>
<b>Entrez</b>	<a href="#">338339</a>
<b>Expiration Date</b>	12 months from date of receipt.



Separation of human neutrophil granulocy...



Flow cytometry surface staining pattern ...