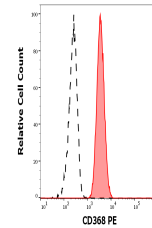


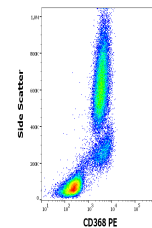
Product Datasheet

CD368 Antibody (PE) (orb1742781)

Description	CD368 is an approximately 25-30 kDa C-type lectin, which serves as one of pattern recognition recept...
Reactivity	Human, Primate
Conjugation	PE
Tested Applications	FC
Immunogen	CD368 ectodomain fused with human Fc
Target	CD368
Preservatives	Stabilizing phosphate buffered saline (PBS), pH 7.4, 15 mM sodium azide
Storage	Store at 2-8°C. Protect from prolonged exposure to light. Do not freeze.
Note	For research use only
Application notes	Flow cytometry: The reagent is designed for analysis of human blood cells using 10 µl reagent / 100 µl of whole blood or 106 cells in a suspension. The content of a vial (1 ml) is sufficient for 100 tests.
Isotype	Mouse IgG2b kappa
Clonality	Monoclonal
Uniprot ID	Q8WXI8
Entrez	338339
Expiration Date	12 months from date of receipt.



Separation of human neutrophil granulocy...



Flow cytometry surface staining pattern ...