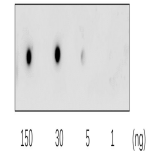


## Product Datasheet

### C Reactive Protein/CRP Antibody (orb1735073)

<b>Description</b>	C Reactive Protein/CRP Antibody
<b>Species/Host</b>	Rabbit
<b>Reactivity</b>	Human
<b>Conjugation</b>	Unconjugated
<b>Tested Applications</b>	IF, IHC, WB
<b>Target</b>	D-Dimer
<b>Storage</b>	Store at +4°C for short term storage. Long time storage is recommended at -20°C 100mM Tris Glycine, 20% Glycerol (pH7). 0.025% ProClin 300 was added as a preservative. Gently mix before use. Optimal concentrations and conditions for each application should be determined by the user.
<b>Note</b>	For research use only
<b>Isotype</b>	Rabbit-IgG
<b>Clonality</b>	Polyclonal
<b>Dilution Range</b>	Western Blot 1:500 - 1:1000 Immunofluorescence 1:200 - 1:400
<b>Expiration Date</b>	12 months from date of receipt.



Specificity and sensitivity of D-Dimer A...