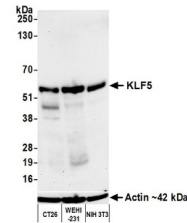


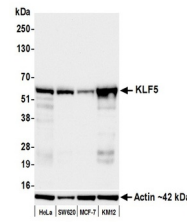
Product Datasheet

KLF5 Antibody (orb1733253)

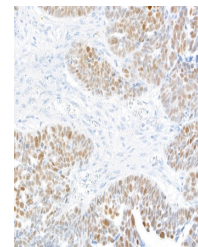
Description	KLF5 Antibody
Species/Host	Rabbit
Reactivity	Human, Mouse
Conjugation	Unconjugated
Tested Applications	FC, ICC, IHC, IP, WB
Immunogen	Between 325 and 375
Target	KLF5
Preservatives	Borate Buffered Saline (BBS) pH 8.2 with 0.09% Sodium Azide, rAlbumin-Free
Form/Appearance	Whole IgG
Concentration	1000 µg/ml
Storage	Shelf life: 1 year from date of receipt. Storage: 2 - 8°C
Note	For research use only
Application notes	Format: Whole IgG
Clonality	Recombinant
Uniprot ID	Q13887
Dilution Range	WB: 1:1000, IP: 6 µl/mg lysate, IHC: 1:100 to 1:500. Epitope retrieval with citrate buffer pH 6.0 is recommended for FFPE tissue sections, ICC: 1:100 to 1:500. Epitope retrieval with citrate buffer pH 6.0 is recommended for FFPE cell sections
Expiration Date	12 months from date of receipt.



Detection of mouse KLF5 by western blot....



Detection of human KLF5 by western blot....



Detection of human KLF5 by immunohistoch...