

Product Datasheet

Rabbit anti-AKT1 Recombinant Monoclonal Antibody (orb1733248)

Description	AKT1 Antibody
Species/Host	Rabbit
Reactivity	Human, Mouse
Conjugation	Unconjugated
Tested Applications	FC, WB
Immunogen	Between 100 and 150
Target	AKT1
Preservatives	Borate Buffered Saline (BBS) pH 8.2 with 0.1% rAlbumin and 0.09% Sodium Azide
Form/Appearance	Whole IgG
Concentration	400 µg/ml
Storage	Maintain refrigerated at 2-8°C for up to 2 weeks. For long term storage store at -20°C in small aliquots to prevent freeze-thaw cycles.
Note	For research use only
Application notes	Format: Whole IgG
Clonality	Recombinant
Clone Number	BLR245L
Antibody Type	Primary Antibody
Uniprot ID	P31749

Biorbyt Ltd.

7 Signet Court, Swann's Road,
Cambridge, CB5 8LA, United Kingdom
Email: info@biorbyt.com, support@biorbyt.com
Phone: [+44 \(0\) 1223 859-353](tel:+44(0)1223859353) | Fax: [+1 \(415\) 651-8558](tel:+1(415)6518558)

Biorbyt LLC.

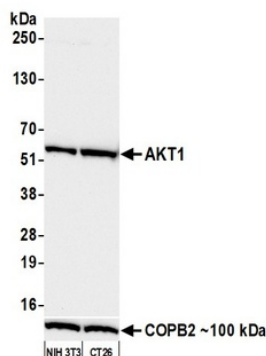
68 TW Alexander Drive,
Durham, NC, 27713, United States
Email: info@biorbyt.com, support@biorbyt.com
Phone: [+1 \(415\) 906-5211](tel:+1(415)9065211) | Fax: [+1 \(415\) 651-8558](tel:+1(415)6518558)

Dilution Range

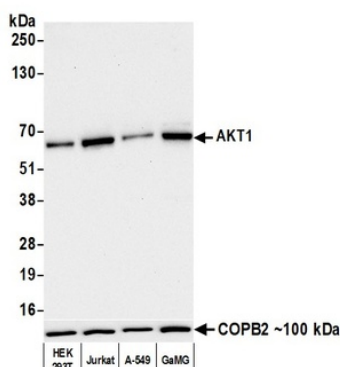
WB: 1:1000

Expiration Date

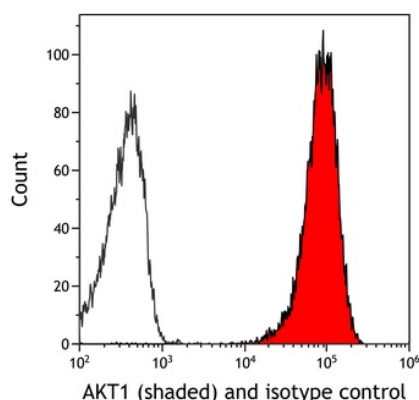
12 months from date of receipt.



Detection of mouse AKT1 by western blot. Samples: Whole cell lysate (25 μ g) from NIH 3T3 and CT26 cells prepared using NETN lysis buffer. Antibody: Rabbit anti-AKT1 recombinant monoclonal antibody (orb1733248) used at 1:1000. Secondary: HRP-conjugated goat anti-rabbit IgG. Detection: Chemiluminescence with an exposure time of 30 seconds. Lower Panel: Rabbit anti-COPB2 antibody.



Detection of human AKT1 by western blot. Samples: Whole cell lysate (10 μ g) from HEK293T, Jurkat, A-549, and GaMG cells prepared using NETN lysis buffer. Antibody: Rabbit anti-AKT1 recombinant monoclonal antibody (orb1733248) used at 1:1000. Secondary: HRP-conjugated goat anti-rabbit IgG. Detection: Chemiluminescence with an exposure time of 30 seconds.



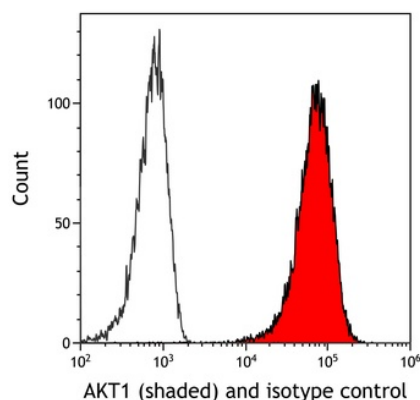
Detection of mouse AKT1 (shaded) in CTLL-2 cells by flow cytometry. Antibody: Rabbit anti-AKT1 recombinant monoclonal antibody (orb1733248) or isotype control (unshaded). Secondary: DyLight® 650-conjugated goat anti-rabbit IgG.

Biorbyt Ltd.

7 Signet Court, Swann's Road,
Cambridge, CB5 8LA, United Kingdom
Email: info@biorbyt.com, support@biorbyt.com
Phone: [+44 \(0\) 1223 859-353](tel:+44(0)1223859353) | Fax: [+1 \(415\) 651-8558](tel:+1(415)6518558)

Biorbyt LLC.

68 TW Alexander Drive,
Durham, NC, 27713, United States
Email: info@biorbyt.com, support@biorbyt.com
Phone: [+1 \(415\) 906-5211](tel:+1(415)9065211) | Fax: [+1 \(415\) 651-8558](tel:+1(415)6518558)



Detection of human AKT1 (shaded) in FaDu cells by flow cytometry. Antibody: Rabbit anti-AKT1 recombinant monoclonal antibody (orb1733248) or isotype control (unshaded). Secondary: DyLight® 650-conjugated goat anti-rabbit IgG.

Biorbyt Ltd.

7 Signet Court, Swann's Road,
Cambridge, CB5 8LA, United Kingdom
Email: info@biorbyt.com, support@biorbyt.com
Phone: [+44 \(0\) 1223 859-353](tel:+44(0)1223859353) | Fax: [+1 \(415\) 651-8558](tel:+1(415)6518558)

Biorbyt LLC.

68 TW Alexander Drive,
Durham, NC, 27713, United States
Email: info@biorbyt.com, support@biorbyt.com
Phone: [+1 \(415\) 906-5211](tel:+1(415)9065211) | Fax: [+1 \(415\) 651-8558](tel:+1(415)6518558)