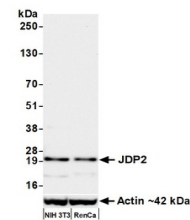


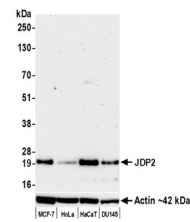
Product Datasheet

JDP2 Antibody (orb1733243)

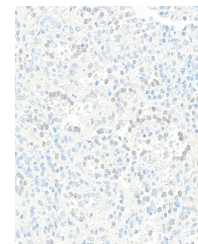
Description	JDP2 Antibody
Species/Host	Rabbit
Reactivity	Human, Mouse
Conjugation	Unconjugated
Tested Applications	FC, ICC, IHC, WB
Immunogen	Between 50 and 100
Target	JDP2
Preservatives	Borate Buffered Saline (BBS) pH 8.2 with 0.1% rAlbumin and 0.09% Sodium Azide
Form/Appearance	Whole IgG
Concentration	400 µg/ml
Storage	Shelf life: 1 year from date of receipt. Storage: 2 - 8°C
Note	For research use only
Application notes	Format: Whole IgG
Clonality	Recombinant
Uniprot ID	Q8WYK2
Dilution Range	WB: 1:1000, IHC: 1:40 to 1:100. Epitope retrieval with Tris-EDTA pH 9.0 is recommended for FFPE tissue sections, ICC: 1:40 to 1:100. Epitope retrieval with Tris-EDTA pH 9.0 is recommended for FFPE cell sections
Expiration Date	12 months from date of receipt.



Detection of mouse JDP2 by western blot....



Detection of human JDP2 by western blot....



Detection of human JDP2 by immunohistoch...