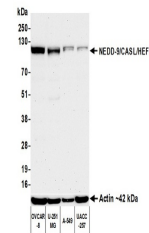


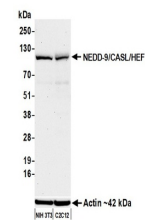
Product Datasheet

NEDD-9/CASL/HEF1 Antibody (orb1733240)

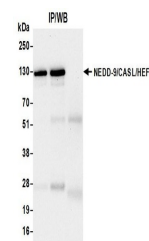
Description	NEDD-9/CASL/HEF1 Antibody
Species/Host	Rabbit
Reactivity	Human, Mouse
Conjugation	Unconjugated
Tested Applications	IP, WB
Immunogen	Between 150 and 200
Target	NEDD-9/CASL/HEF1
Preservatives	Borate Buffered Saline (BBS) pH 8.2 with 0.09% Sodium Azide, rAlbumin-Free
Form/Appearance	Whole IgG
Concentration	1000 µg/ml
Storage	Shelf life: 1 year from date of receipt. Storage: 2 - 8°C
Note	For research use only
Application notes	Format: Whole IgG
Clonality	Recombinant
Uniprot ID	Q14511
Dilution Range	WB: 1:1000, IP: 6 µl/mg lysate
Expiration Date	12 months from date of receipt.



Detection of human NEDD-9/CASL/HEF1 by w...



Detection of mouse NEDD-9/CASL/HEF1 by w...



Detection of human NEDD-9/CASL/HEF1 by w...