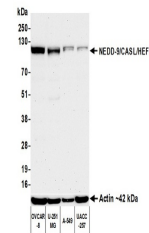


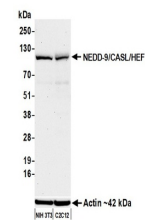
## Product Datasheet

### NEDD-9/CASL/HEF1 Antibody (orb1733239)

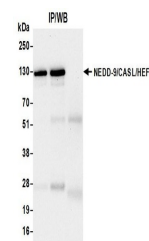
|                            |  |
|----------------------------|--|
| <b>Description</b>         | NEDD-9/CASL/HEF1 Antibody  |
| <b>Species/Host</b>        | Rabbit   |
| <b>Reactivity</b>          | Human, Mouse   |
| <b>Conjugation</b>         | Unconjugated   |
| <b>Tested Applications</b> | IP, WB   |
| <b>Immunogen</b>           | Between 150 and 200  |
| <b>Target</b>              | NEDD-9/CASL/HEF1   |
| <b>Preservatives</b>       | Borate Buffered Saline (BBS) pH 8.2 with 0.09% Sodium Azide, rAlbumin-Free |
| <b>Form/Appearance</b>     | Whole IgG  |
| <b>Concentration</b>       | 1000 µg/ml   |
| <b>Storage</b>             | Shelf life: 1 year from date of receipt. Storage: 2 - 8°C                  |
| <b>Note</b>                | For research use only  |
| <b>Application notes</b>   | Format: Whole IgG  |
| <b>Clonality</b>           | Recombinant  |
| <b>Uniprot ID</b>          | <a href="#">Q14511</a>   |
| <b>Dilution Range</b>      | WB: 1:1000, IP: 6 µl/mg lysate   |
| <b>Expiration Date</b>     | 12 months from date of receipt.  |



Detection of human NEDD-9/CASL/HEF1 by w...



Detection of mouse NEDD-9/CASL/HEF1 by w...



Detection of human NEDD-9/CASL/HEF1 by w...