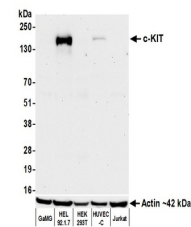


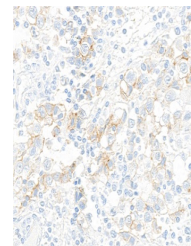
Product Datasheet

c-Kit Antibody (orb1733238)

| | |
|----------------------------|--|
| Description | c-Kit Antibody |
| Species/Host | Rabbit |
| Reactivity | Human |
| Conjugation | Unconjugated |
| Tested Applications | ICC, IHC, WB |
| Immunogen | Between 325 and 375 |
| Target | c-Kit |
| Preservatives | Borate Buffered Saline (BBS) pH 8.2 with 0.09% Sodium Azide, rAlbumin-Free |
| Form/Appearance | Whole IgG |
| Concentration | 1000 µg/ml |
| Storage | Shelf life: 1 year from date of receipt. Storage: 2 - 8°C |
| Note | For research use only |
| Application notes | Format: Whole IgG |
| Clonality | Recombinant |
| Uniprot ID | P10721 |
| Dilution Range | WB: 1:1000, IHC: 1:100 to 1:500. Epitope retrieval with citrate buffer pH 6.0 is recommended for FFPE tissue sections, ICC: 1:100 to 1:500. Epitope retrieval with citrate buffer pH 6.0 is recommended for FFPE cell sections |
| Expiration Date | 12 months from date of receipt. |



Detection of human c-KIT by western blot...



Detection of human c-KIT by immunohistoc...



Detection of human c-KIT by immunocytoch...