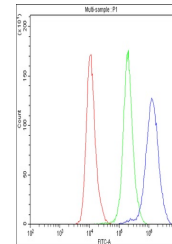


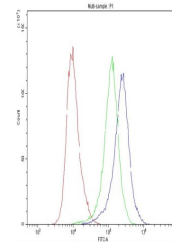
## Product Datasheet

# Anti-Caspase 8/CASP8 Antibody (orb1728223)

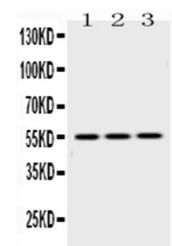
<b>Description</b>	0
<b>Species/Host</b>	Rabbit
<b>Reactivity</b>	Human, Mouse, Rat
<b>Conjugation</b>	Unconjugated
<b>Tested Applications</b>	FC, ICC, IHC, IHC-Fr, WB
<b>Immunogen</b>	A synthetic peptide corresponding to a sequence at the N-terminus of human Caspase 8 (410-449aa VSYRNPAEGTWYIQSLCQSLRERCPRGDDILTILTEVNYE), different from the related mouse and rat sequences by seven amino acids.
<b>Form/Appearance</b>	Lyophilized
<b>Storage</b>	At -20°C for one year from date of receipt. After reconstitution, at 4°C for one month. It can also be aliquotted and stored frozen at -20°C for six months. Avoid repeated freezing and thawing.
<b>Note</b>	For research use only
<b>Application notes</b>	Western blot, 0.1-0.5 µg/ml, Human, Mouse, Rat Immunohistochemistry(Paraffin-embedded Section), 0.5-1 µg/ml, Human, Mouse, Rat, By Heat Immunohistochemistry(Frozen Section), 0.5-1 µg/ml, Human Immunocytochemistry, 0.5-1 µg/ml, Human Flow Cytometry, 1-3 µg/1x10 <sup>6</sup> cells, Human. Adding 0.2 ml of distilled water will yield a concentration of 500 µg/ml
<b>Isotype</b>	Rabbit IgG
<b>Clonality</b>	Polyclonal
<b>MW</b>	55391 MW
<b>Uniprot ID</b>	<a href="#">Q14790</a>
<b>Expiration Date</b>	12 months from date of receipt.



Flow Cytometry analysis of PC-3 cells us...



Flow Cytometry analysis of HeLa cells us...



WB analysis of Caspase8 using anti-Caspa...