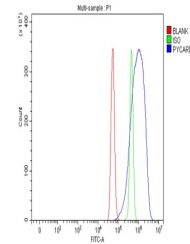


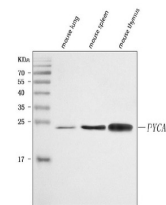
## Product Datasheet

### ASC/TMS1/Pycard Antibody (orb1728210)

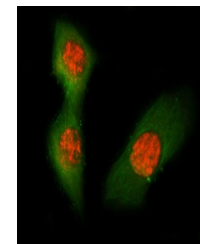
<b>Description</b>	ASC/TMS1/Pycard Antibody
<b>Species/Host</b>	Rabbit
<b>Reactivity</b>	Mouse
<b>Conjugation</b>	Unconjugated
<b>Tested Applications</b>	ELISA, FC, ICC, IF, WB
<b>Immunogen</b>	E.coli-derived mouse ASC/TMS1/Pycard recombinant protein (Position: K24-S193).
<b>Form/Appearance</b>	Lyophilized
<b>Concentration</b>	Adding 0.2 ml of distilled water will yield a concentration of 500 µg/ml.
<b>Storage</b>	At -20°C for one year from date of receipt. After reconstitution, at 4°C for one month. It can also be aliquotted and stored frozen at -20°C for six months. Avoid repeated freezing and thawing.
<b>Note</b>	For research use only
<b>Application notes</b>	Western blot, 0.25-0.5 µg/ml, Mouse Immunocytochemistry/Immunofluorescence, 5 µg/ml, Mouse Flow Cytometry (Fixed), 1-3 µg/1x1x106 cells, Mouse Direct ELISA, 0.1-0.5 µg/ml, Mouse. Adding 0.2 ml of distilled water will yield a concentration of 500 µg/ml
<b>Isotype</b>	Rabbit IgG
<b>Clonality</b>	Polyclonal
<b>MW</b>	22 kDa
<b>Uniprot ID</b>	<a href="#">Q9EPB4</a>
<b>Expiration Date</b>	12 months from date of receipt.



Flow Cytometry analysis of RAW264.7 cell...



WB analysis of ASC/TMS1/Pycard using ant...



IF analysis of ASC/TMS1/Pycard using ant...