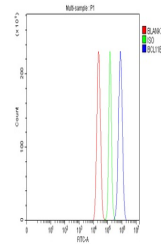


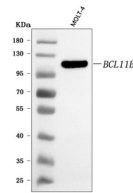
Product Datasheet

BCL11B Antibody (orb1728170)

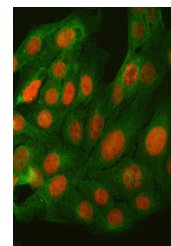
| | |
|----------------------------|---|
| Description | BCL11B Antibody |
| Species/Host | Rabbit |
| Reactivity | Human, Rat |
| Conjugation | Unconjugated |
| Tested Applications | ELISA, FC, ICC, IF, IHC, WB |
| Immunogen | E.coli-derived human BCL11B recombinant protein (Position: Q10-A628). |
| Form/Appearance | Lyophilized |
| Concentration | Adding 0.2 ml of distilled water will yield a concentration of 500 µg/ml. |
| Storage | At -20°C for one year from date of receipt. After reconstitution, at 4°C for one month. It can also be aliquotted and stored frozen at -20°C for six months. Avoid repeated freezing and thawing. |
| Note | For research use only |
| Application notes | Western blot, 0.1-0.25 µg/ml, Human Immunohistochemistry(Paraffin-embedded Section), 2-5 µg/ml, Human Immunocytochemistry/Immunofluorescence, 5 µg/ml, Human Flow Cytometry, 1-3 µg /1x10 ⁶ cells, Rat Direct ELISA, 0.1-0.5 µg/ml, Human. Tested Species: In-house tested species with positive results. Other applications have not been tested. Optimal dilutions should be determined by end users. Adding 0.2 ml of distilled water will yield a concentration of 500 µg/ml |
| Clonality | Polyclonal |
| MW | 116 kDa |
| Uniprot ID | Q9C0K0 |
| Expiration Date | 12 months from date of receipt. |



Flow Cytometry analysis of C6 cells using anti-BCL11B antibody.



WB analysis of BCL11B using anti-BCL11B antibody.



IF analysis of BCL11B using anti-BCL11B antibody.