

---

## Product Datasheet

### ASC/TMS1/PYCARD Antibody (orb1728091)

**Description**

ASC/TMS1/PYCARD Antibody

**Species/Host**

Rabbit

**Reactivity**

Human

**Conjugation**

Unconjugated

**Tested**

ELISA, FC, ICC, IF, IHC, WB

**Applications**
**Immunogen**

E.coli-derived human ASC/TMS1/PYCARD recombinant protein (Position: M1-S195).

**Form/Appearance**

Lyophilized

**Concentration**

Adding 0.2 ml of distilled water will yield a concentration of 500 µg/ml.

**Storage**

At -20°C for one year from date of receipt. After reconstitution, at 4°C for one month. It can also be aliquotted and stored frozen at -20°C for six months. Avoid repeated freezing and thawing.

**Note**

For research use only

**Application notes**

 Western blot, 0.1-0.25 µg/ml, Human Immunohistochemistry(Paraffin-embedded Section), 2-5 µg/ml, Human Immunocytochemistry/Immunofluorescence, 5 µg/ml, Human Immunofluorescence, 5 µg/ml, Human Flow Cytometry (Fixed), 1-3 µg/1x10<sup>6</sup> cells, Human ELISA, 0.1-0.5 µg/ml, Human. Adding 0.2 ml of distilled water will yield a concentration of 500 µg/ml

**Isotype**

Rabbit IgG

**Clonality**

Polyclonal

**MW**

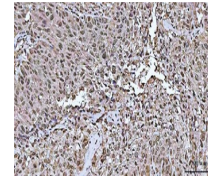
24 kDa

**Uniprot ID**
[Q9ULZ3](#)
**Dilution Range**

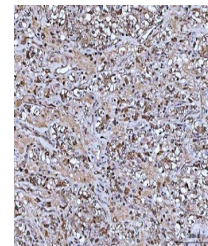
 Western blot, 0.1-0.25 µg/ml, Human Immunohistochemistry(Paraffin-embedded Section), 2-5 µg/ml, Human Immunocytochemistry/Immunofluorescence, 5 µg/ml, Human Flow Cytometry, 1-3 µg/1x10<sup>6</sup> cells, Human Direct ELISA, 0.1-0.5 µg/ml, Human

**Expiration Date**

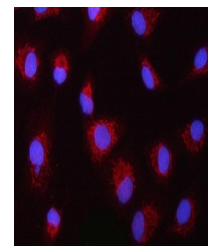
12 months from date of receipt.



IHC analysis of ASC/TMS1/PYCARD using an...



IHC analysis of ASC/TMS1/PYCARD using an...



IF analysis of ASC/TMS1/PYCARD using ant...