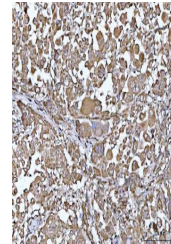


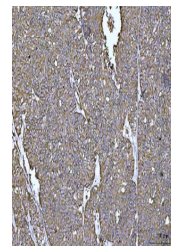
## Product Datasheet

### PYCR1 Antibody (orb1728090)

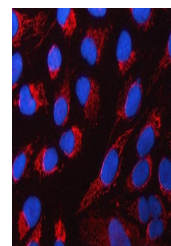
|                            |   |
|----------------------------|---|
| <b>Description</b>         | PYCR1 Antibody  |
| <b>Species/Host</b>        | Rabbit  |
| <b>Reactivity</b>          | Human   |
| <b>Conjugation</b>         | Unconjugated  |
| <b>Tested Applications</b> | ELISA, FC, ICC, IF, IHC, WB   |
| <b>Immunogen</b>           | E.coli-derived human PYCR1 recombinant protein (Position: Q10-D319).  |
| <b>Form/Appearance</b>     | Lyophilized   |
| <b>Concentration</b>       | Adding 0.2 ml of distilled water will yield a concentration of 500 µg/ml.   |
| <b>Storage</b>             | At -20°C for one year from date of receipt. After reconstitution, at 4°C for one month. It can also be aliquotted and stored frozen at -20°C for six months. Avoid repeated freezing and thawing.   |
| <b>Note</b>                | For research use only   |
| <b>Application notes</b>   | Western blot, 0.25-0.5 µg/ml, Human Immunohistochemistry(Paraffin-embedded Section), 2-5 µg/ml, Human Immunocytochemistry/Immunofluorescence, 5 µg/ml, Human Immunofluorescence, 5 µg/ml, Human Flow Cytometry, 1-3 µg/1x10 <sup>6</sup> cells, Human Direct ELISA, 0.1-0.5 µg/ml, Human. Tested Species: In-house tested species with positive results. Other applications have not been tested. Optimal dilutions should be determined by end users. Adding 0.2 ml of distilled water will yield a concentration of 500 µg/ml |
| <b>Clonality</b>           | Polyclonal  |
| <b>MW</b>                  | 35 kDa  |
| <b>Uniprot ID</b>          | <b>P32322</b>   |
| <b>Expiration Date</b>     | 12 months from date of receipt.   |



IHC analysis of PYCR1 using anti-PYCR1 a...



IHC analysis of PYCR1 using anti-PYCR1 a...



IF analysis of PYCR1 using anti-PYCR1 an...