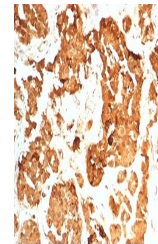


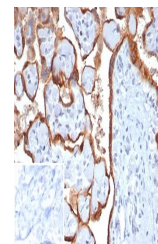
Product Datasheet

HCG-beta Antibody (orb1716297)

Description	Human chorionic gonadotropin antibody (hCG) is a glycoprotein hormone synthesized in syncytiotrophob...
Species/Host	Rabbit
Reactivity	Human
Conjugation	Unconjugated
Tested Applications	IHC-P
Immunogen	Recombinant full-length human protein was used as the immunogen for the HCG-beta antibody.
Storage	Aliquot the HCG-beta antibody and store frozen at -20°C or colder. Avoid repeated freeze-thaw cycles.
Note	For research use only
Application notes	Optimal dilution of the HCG-beta antibody should be determined by the researcher.
Formula	0.2 mg/ml in 1X PBS with 0.1 mg/ml BSA (US sourced), 0.05% sodium azide
Isotype	Rabbit IgG, kappa
Clonality	Recombinant
Uniprot ID	P01233
Hazard Information	This HCG-beta antibody is available for research use only.
Dilution Range	Immunohistochemistry (FFPE): 1-2ug/ml
Expiration Date	12 months from date of receipt.



IHC staining of FFPE human pituitary gla...



IHC staining of FFPE human placental tis...