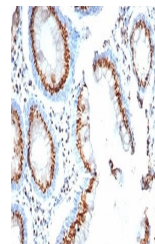


Product Datasheet

Golgi Antibody / GLG1 (orb1716284)

Description	This MAb recognizes a protein of 134kDa, which binds fibroblast growth factor and E-selectin (cell-a...
Species/Host	Mouse
Reactivity	Human
Conjugation	Unconjugated
Tested Applications	IHC
Immunogen	Recombinant full-length human protein was used as the immunogen for the GLG1 antibody.
Storage	Aliquot the GLG1 antibody and store frozen at -20°C or colder. Avoid repeated freeze-thaw cycles.
Note	For research use only
Application notes	Optimal dilution of the GLG1 antibody should be determined by the researcher.
Formula	0.2 mg/ml in 1X PBS with 0.1 mg/ml BSA (US sourced), 0.05% sodium azide
Isotype	Mouse IgG2b, kappa
Clonality	Monoclonal
Uniprot ID	Q92896
Hazard Information	This GLG1 antibody is available for research use only.
Dilution Range	Immunohistochemistry (Frozen & FFPE): 0.5-1ug/ml (No special pretreatment is required for the immunohistochemical staining of formalin-fixed tissues)
Expiration Date	12 months from date of receipt.



IHC staining of FFPE human colon tissue ...