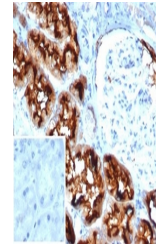


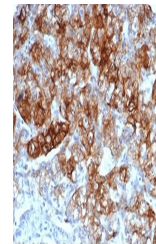
## Product Datasheet

### CD13 Antibody / ANPEP (orb1716267)

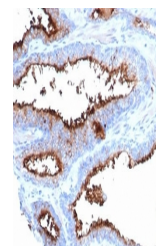
<b>Description</b>	Recognizes an integral membrane glycoprotein of 150kDa, identified as CD13 (also known as aminopepti...
<b>Species/Host</b>	Mouse
<b>Reactivity</b>	Human
<b>Conjugation</b>	Unconjugated
<b>Tested Applications</b>	ELISA, IHC-P, WB
<b>Immunogen</b>	A portion of amino acids 50-250 from the human ANPEP protein was used as the immunogen for the CD13 antibody. The antibody recognizes an extracellular epitope.
<b>Storage</b>	Aliquot the CD13 antibody and store frozen at -20°C or colder. Avoid repeated freeze-thaw cycles.
<b>Note</b>	For research use only
<b>Application notes</b>	Optimal dilution of the CD13 antibody should be determined by the researcher.
<b>Formula</b>	0.2 mg/ml in 1X PBS with 0.1 mg/ml BSA (US sourced), 0.05% sodium azide
<b>Isotype</b>	Mouse IgG2b, kappa
<b>Clonality</b>	Monoclonal
<b>Uniprot ID</b>	<b>P15144</b>
<b>Hazard Information</b>	This CD13 antibody is available for research use only.
<b>Dilution Range</b>	ELISA: order antibody without BSA for coating,Western blot: 1-2ug/ml,Immunohistochemistry (FFPE): 1-2ug/ml
<b>Expiration Date</b>	12 months from date of receipt.



IHC staining of FFPE human kidney tissue...



IHC staining of FFPE human kidney carcin...



IHC staining of FFPE human prostate tiss...