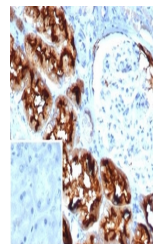


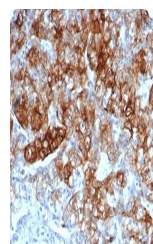
Product Datasheet

CD13 Antibody / ANPEP (orb1716265)

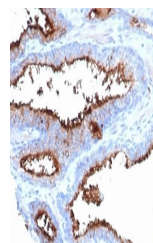
Description	Recognizes an integral membrane glycoprotein of 150kDa, identified as CD13 (also known as aminopepti...
Species/Host	Mouse
Reactivity	Human
Conjugation	Unconjugated
Tested Applications	ELISA, IHC-P, WB
Immunogen	A portion of amino acids 50-250 from the human ANPEP protein was used as the immunogen for the CD13 antibody. The antibody recognizes an extracellular epitope.
Storage	Aliquot the CD13 antibody and store frozen at -20°C or colder. Avoid repeated freeze-thaw cycles.
Note	For research use only
Application notes	Optimal dilution of the CD13 antibody should be determined by the researcher.
Formula	1 mg/ml in 1X PBS; BSA free, sodium azide free
Isotype	Mouse IgG2b, kappa
Clonality	Monoclonal
Uniprot ID	P15144
Hazard Information	This CD13 antibody is available for research use only.
Dilution Range	ELISA: order antibody without BSA for coating,Western blot: 1-2ug/ml,Immunohistochemistry (FFPE): 1-2ug/ml
Expiration Date	12 months from date of receipt.



IHC staining of FFPE human kidney tissue...



IHC staining of FFPE human kidney carcin...



IHC staining of FFPE human prostate tiss...