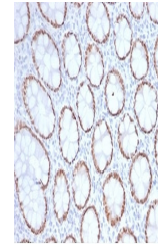


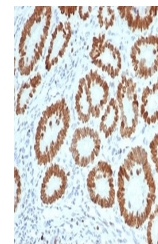
## Product Datasheet

### SATB2 Antibody (orb1716259)

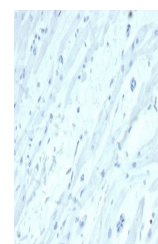
<b>Description</b>	SATB2 is a DNA binding protein that specifically binds nuclear matrix attachment regions. It is invo...
<b>Species/Host</b>	Mouse
<b>Reactivity</b>	Human
<b>Conjugation</b>	Unconjugated
<b>Tested Applications</b>	IHC-P
<b>Immunogen</b>	A portion of amino acids 150-350 from the human SATB2 protein was used as the immunogen for the SATB2 antibody.
<b>Storage</b>	Aliquot the SATB2 antibody and store frozen at -20°C or colder. Avoid repeated freeze-thaw cycles.
<b>Note</b>	For research use only
<b>Application notes</b>	Optimal dilution of the SATB2 antibody should be determined by the researcher.
<b>Formula</b>	1 mg/ml in 1X PBS; BSA free, sodium azide free
<b>Isotype</b>	Mouse IgG2b, kappa
<b>Clonality</b>	Monoclonal
<b>Uniprot ID</b>	<a href="#">Q9UPW6</a>
<b>Hazard Information</b>	This SATB2 antibody is available for research use only.
<b>Dilution Range</b>	Immunohistochemistry (FFPE): 1-2ug/ml
<b>Expiration Date</b>	12 months from date of receipt.



IHC staining of FFPE human colon tissue ...



IHC staining of FFPE human colon tissue ...



Negative control: IHC staining of FFPE h...