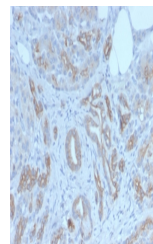


## Product Datasheet

### Golgi Antibody / GLG1 (orb1716242)

<b>Description</b>	The Golgi apparatus is an organelle present in all eukaryotic cells that forms a part of the endomem...
<b>Species/Host</b>	Rabbit
<b>Reactivity</b>	Human
<b>Conjugation</b>	Unconjugated
<b>Tested Applications</b>	IHC
<b>Immunogen</b>	Recombinant full-length human protein was used as the immunogen for the Golgi Glycoprotein 1 antibody.
<b>Storage</b>	Aliquot the Golgi Glycoprotein 1 antibody and store frozen at -20°C or colder. Avoid repeated freeze-thaw cycles.
<b>Note</b>	For research use only
<b>Application notes</b>	Optimal dilution of the Golgi Glycoprotein 1 antibody should be determined by the researcher.
<b>Formula</b>	0.2 mg/ml in 1X PBS with 0.1 mg/ml BSA (US sourced), 0.05% sodium azide
<b>Isotype</b>	Rabbit IgG, kappa
<b>Clonality</b>	Recombinant
<b>Uniprot ID</b>	<a href="#">Q92896</a>
<b>Hazard Information</b>	This Golgi Glycoprotein 1 antibody is available for research use only.
<b>Dilution Range</b>	Immunohistochemistry (Frozen & FFPE): 0.5-1ug/ml (No special pretreatment is required for the immunohistochemical staining of formalin-fixed tissues)
<b>Expiration Date</b>	12 months from date of receipt.



IHC staining of FFPE human breast carcin...