

Product Datasheet

CD13 Antibody / ANPEP (orb1716237)

Description Recognizes an integral membrane glycoprotein of 150kDa, identified as CD13 (also known as aminopepti...

Species/Host Mouse

Reactivity Human

Conjugation Unconjugated

Tested Applications ELISA, IHC-P, WB

Immunogen A portion of amino acids 50-250 from the human protein was used as the immunogen for the Aminopeptidase-N antibody.

Storage Aliquot the Aminopeptidase-N antibody and store frozen at -20°C or colder. Avoid repeated freeze-thaw cycles.

Note For research use only

Application notes Optimal dilution of the Aminopeptidase-N antibody should be determined by the researcher.

Formula 0.2 mg/ml in 1X PBS with 0.1 mg/ml BSA (US sourced), 0.05% sodium azide

Isotype Mouse IgG1, kappa

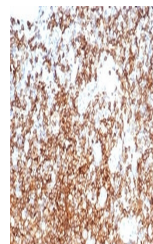
Clonality Monoclonal

Uniprot ID **P15144**

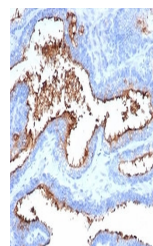
Hazard Information This Aminopeptidase-N antibody is available for research use only.

Dilution Range ELISA: order antibody without BSA for coating,Western blot: 1-2ug/ml,Immunohistochemistry (FFPE): 1-2ug/ml

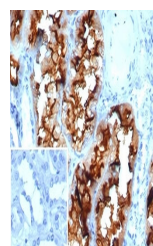
Expiration Date 12 months from date of receipt.



IHC staining of FFPE human tonsil with C...



IHC staining of FFPE human prostate tiss...



IHC staining of FFPE human kidney with C...