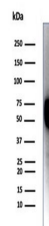


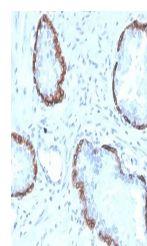
Product Datasheet

Cytokeratin 14 Antibody / CK14 / KRT14 (orb1716211)

Description	Cytokeratin 14 is a member of the type I keratin family of intermediate filament proteins. It always...
Species/Host	Mouse
Reactivity	Human
Conjugation	Unconjugated
Tested Applications	IHC-P, WB
Immunogen	A portion of amino acids 350-472 was used as the immunogen for the KRT14 antibody.
Storage	Aliquot the KRT14 antibody and store frozen at -20°C or colder. Avoid repeated freeze-thaw cycles.
Note	For research use only
Application notes	Optimal dilution of the KRT14 antibody should be determined by the researcher.
Formula	1 mg/ml in 1X PBS; BSA free, sodium azide free
Isotype	Mouse IgG2b, kappa
Clonality	Monoclonal
Uniprot ID	P02533
Hazard Information	This KRT14 antibody is available for research use only.
Dilution Range	Western blot: 1-2ug/ml, Immunohistochemistry (FFPE): 1-2ug/ml
Expiration Date	12 months from date of receipt.



Western blot testing of A431 cell lysate...



IHC staining of FFPE human prostate tiss...



Analysis of HuProt (TM) microarray conta...