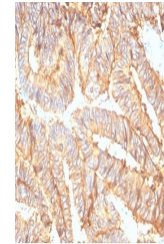


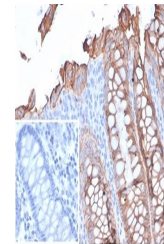
Product Datasheet

EpCAM Antibody (orb1716206)

Description	EGP40 is a 40-43kDa transmembrane epithelial glycoprotein, also identified as epithelial specific an...
Species/Host	Mouse
Reactivity	Human
Conjugation	Unconjugated
Tested Applications	FACS, IHC-P
Immunogen	Recombinant full-length human protein was used as the immunogen for the recombinant EpCAM antibody.
Storage	Aliquot the recombinant EpCAM antibody and store frozen at -20°C or colder. Avoid repeated freeze-thaw cycles.
Note	For research use only
Application notes	Optimal dilution of the recombinant EpCAM antibody should be determined by the researcher.
Formula	0.2 mg/ml in 1X PBS with 0.1 mg/ml BSA (US sourced), 0.05% sodium azide
Isotype	Mouse IgG1, kappa
Clonality	Recombinant
Uniprot ID	P16422
Hazard Information	This recombinant EpCAM antibody is available for research use only.
Dilution Range	Flow cytometry: 1-2ug/million cells, Immunohistochemistry (FFPE): 1-2ug/ml
Expiration Date	12 months from date of receipt.



IHC staining of FFPE human colon carcino...



IHC staining of FFPE human colon tissue ...