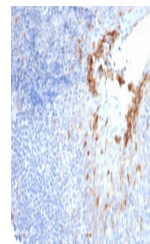


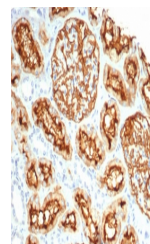
## Product Datasheet

### CD10 Antibody / Neprilysin (orb1716190)

<b>Description</b>	Recognizes a 100kDa glycoprotein, identified as CD10, also known as Common Acute Lymphocytic Leukemi...
<b>Species/Host</b>	Rabbit
<b>Reactivity</b>	Human
<b>Conjugation</b>	Unconjugated
<b>Tested Applications</b>	IHC-P
<b>Immunogen</b>	A portion of amino acids 1-500 was used as the immunogen for the recombinant CD10 antibody.
<b>Storage</b>	Aliquot the recombinant CD10 antibody and store frozen at -20°C or colder. Avoid repeated freeze-thaw cycles.
<b>Note</b>	For research use only
<b>Application notes</b>	Optimal dilution of the recombinant CD10 antibody should be determined by the researcher.
<b>Formula</b>	1 mg/ml in 1X PBS; BSA free, sodium azide free
<b>Isotype</b>	Rabbit IgG, kappa
<b>Clonality</b>	Recombinant
<b>Uniprot ID</b>	<b>P08473</b>
<b>Hazard Information</b>	This recombinant CD10 antibody is available for research use only.
<b>Dilution Range</b>	Immunohistochemistry (FFPE): 1-2ug/ml
<b>Expiration Date</b>	12 months from date of receipt.



IHC staining of FFPE human prostate tiss...



IHC staining of FFPE human kidney tissue...