

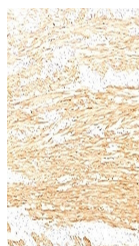
Product Datasheet

Smoothelin Antibody / SMSMO / SMTN (orb1716161)

Description	Smoothelin is found exclusively in contractile smooth muscle cells. It associates with stress fibers...
Species/Host	Rabbit
Reactivity	Human
Conjugation	Unconjugated
Tested Applications	IHC-P
Immunogen	Recombinant full-length human protein was used as the immunogen for the recombinant Smoothelin antibody.
Storage	Aliquot the recombinant Smoothelin antibody and store frozen at -20°C or colder. Avoid repeated freeze-thaw cycles.
Note	For research use only
Application notes	Optimal dilution of the recombinant Smoothelin antibody should be determined by the researcher.
Formula	0.2 mg/ml in 1X PBS with 0.1 mg/ml BSA (US sourced), 0.05% sodium azide
Isotype	Rabbit IgG, kappa
Clonality	Recombinant
Uniprot ID	P53814
Hazard Information	This recombinant Smoothelin antibody is available for research use only.
Dilution Range	Immunohistochemistry (FFPE): 1-2ug/ml
Expiration Date	12 months from date of receipt.



IHC staining of FFPE human colon tissue ...



IHC staining of FFPE human colon tissue ...