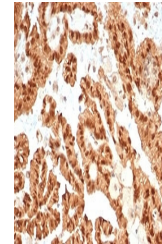


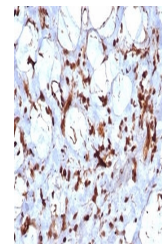
Product Datasheet

STAT6 Antibody (orb1716156)

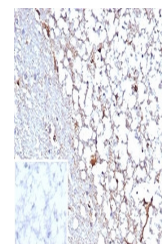
Description	STAT6 is a transcription factor in the Jak/STAT signal transduction pathway responsible for mediatin...
Species/Host	Rabbit
Reactivity	Human
Conjugation	Unconjugated
Tested Applications	IHC-P
Immunogen	Recombinant full-length human protein was used as the immunogen for the recombinant STAT6 antibody.
Storage	Aliquot the recombinant STAT6 antibody and store frozen at -20°C or colder. Avoid repeated freeze-thaw cycles.
Note	For research use only
Application notes	Optimal dilution of the recombinant STAT6 antibody should be determined by the researcher.
Formula	0.2 mg/ml in 1X PBS with 0.1 mg/ml BSA (US sourced), 0.05% sodium azide
Isotype	Rabbit IgG, kappa
Clonality	Recombinant
Uniprot ID	P42226
Hazard Information	This recombinant STAT6 antibody is available for research use only.
Dilution Range	Immunohistochemistry (FFPE): 1-2ug/ml
Expiration Date	12 months from date of receipt.



IHC staining of FFPE human renal cell ca...



IHC staining of FFPE human liposarcoma t...



IHC staining of FFPE human cerebellum ti...