

## Product Datasheet

### CKB Antibody / Creatine kinase B (orb1716150)

**Description** Creatine kinases (CK) are a large family of isoenzymes that regulate levels of ATP in subcellular co...

**Species/Host** Mouse

**Reactivity** Human

**Conjugation** Unconjugated

**Tested Applications** ELISA, IHC-P, WB

**Immunogen** A recombinant human full-length protein was used as the immunogen for the CKB antibody.

**Storage** Aliquot the CKB antibody and store frozen at -20°C or colder. Avoid repeated freeze-thaw cycles.

**Note** For research use only

**Application notes** Optimal dilution of the CKB antibody should be determined by the researcher.

**Formula** 0.2 mg/ml in 1X PBS with 0.1 mg/ml BSA (US sourced), 0.05% sodium azide

**Isotype** Mouse IgG1, kappa

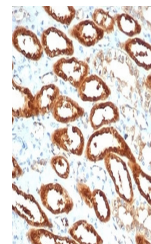
**Clonality** Monoclonal

**Uniprot ID** [P12277](#)

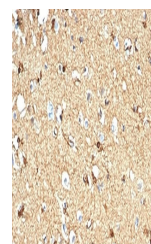
**Hazard Information** This CKB antibody is available for research use only.

**Dilution Range** ELISA: for coating, order antibody without BSA, Western blot: 1-2ug/ml, Immunohistochemistry (FFPE): 1-2ug/ml

**Expiration Date** 12 months from date of receipt.



IHC staining of FFPE human kidney tissue...



IHC staining of FFPE human brain tissue ...



Western blot testing of human Y79 cell l...