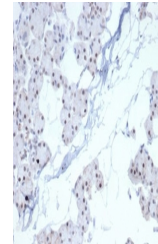


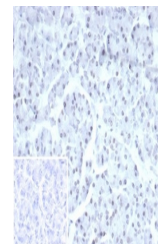
## Product Datasheet

### PHOX2B Antibody (orb1716140)

|                            |   |
|----------------------------|---|
| <b>Description</b>         | Paired homeobox protein 2B (PHOX2B) is a transcription factor located on chromosome 4p13, which is e...         |
| <b>Species/Host</b>        | Rabbit  |
| <b>Reactivity</b>          | Human   |
| <b>Conjugation</b>         | Unconjugated  |
| <b>Tested Applications</b> | IHC-P   |
| <b>Immunogen</b>           | A human PHOX2B partial protein was used as the immunogen for the recombinant PHOX2B antibody.                   |
| <b>Storage</b>             | Aliquot the recombinant PHOX2B antibody and store frozen at -20°C or colder. Avoid repeated freeze-thaw cycles. |
| <b>Note</b>                | For research use only   |
| <b>Application notes</b>   | Optimal dilution of the recombinant PHOX2B antibody should be determined by the researcher.                     |
| <b>Formula</b>             | 0.2 mg/ml in 1X PBS with 0.1 mg/ml BSA (US sourced), 0.05% sodium azide   |
| <b>Isotype</b>             | Rabbit IgG, kappa   |
| <b>Clonality</b>           | Recombinant   |
| <b>Uniprot ID</b>          | <a href="#">Q99453</a>  |
| <b>Hazard Information</b>  | This recombinant PHOX2B antibody is available for research use only.  |
| <b>Dilution Range</b>      | Immunohistochemistry (FFPE): 1-2ug/ml   |
| <b>Expiration Date</b>     | 12 months from date of receipt.   |



IHC staining of FFPE human renal cell ca...



IHC staining of FFPE human pancreas with...