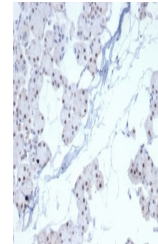


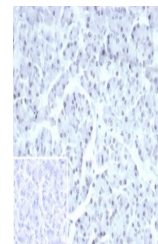
## Product Datasheet

### PHOX2B Antibody (orb1716139)

<b>Description</b>	Paired homeobox protein 2B (PHOX2B) is a transcription factor located on chromosome 4p13, which is e...
<b>Species/Host</b>	Rabbit
<b>Reactivity</b>	Human
<b>Conjugation</b>	Unconjugated
<b>Tested Applications</b>	IHC-P
<b>Immunogen</b>	A human PHOX2B partial protein was used as the immunogen for the recombinant PHOX2B antibody.
<b>Storage</b>	Aliquot the recombinant PHOX2B antibody and store frozen at -20°C or colder. Avoid repeated freeze-thaw cycles.
<b>Note</b>	For research use only
<b>Application notes</b>	Optimal dilution of the recombinant PHOX2B antibody should be determined by the researcher.
<b>Formula</b>	1 mg/ml in 1X PBS; BSA free, sodium azide free
<b>Isotype</b>	Rabbit IgG, kappa
<b>Clonality</b>	Recombinant
<b>Uniprot ID</b>	<a href="#">Q99453</a>
<b>Hazard Information</b>	This recombinant PHOX2B antibody is available for research use only.
<b>Dilution Range</b>	Immunohistochemistry (FFPE): 1-2ug/ml
<b>Expiration Date</b>	12 months from date of receipt.



IHC staining of FFPE human renal cell ca...



IHC staining of FFPE human pancreas with...