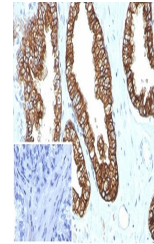


Product Datasheet

Cytokeratin 8/18 Antibody (orb1716115)

Description	Cytokeratin 8 (CK8) belongs to the type II (or B or basic) subfamily of high molecular weight cytoke...
Species/Host	Rabbit
Reactivity	Human
Conjugation	Unconjugated
Tested Applications	IHC-P
Immunogen	Recombinant full-length human CK8 and CK18 proteins were used as the immunogen for the recombinant Keratin 8/18 antibody.
Storage	Aliquot the recombinant Keratin 8/18 antibody and store frozen at -20°C or colder. Avoid repeated freeze-thaw cycles.
Note	For research use only
Application notes	Optimal dilution of the recombinant Keratin 8/18 antibody should be determined by the researcher.
Formula	1 mg/ml in 1X PBS; BSA free, sodium azide free
Isotype	Rabbit IgG, kappa
Clonality	Recombinant
Uniprot ID	P05783, P05787
Hazard Information	This recombinant Keratin 8/18 antibody is available for research use only.
Dilution Range	Immunohistochemistry (FFPE): 1-2ug/ml
Expiration Date	12 months from date of receipt.



IHC staining of FFPE human prostate carc...