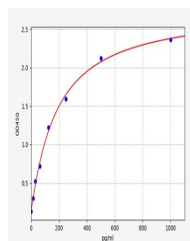


## Product Datasheet

### Mouse GLS(Glutaminase kidney isoform, mitochondrial) ELISA Kit (orb1715199)

<b>Description</b>	Mouse GLS(Glutaminase kidney isoform, mitochondrial) ELISA Kit
<b>Reactivity</b>	Mouse
<b>Range</b>	15.625-1000pg/ml
<b>Target</b>	GLS
<b>Storage</b>	2-8 °C for 6 months
<b>Note</b>	For research use only
<b>Sample Types</b>	Serum, Plasma, Cell Culture Supernatant, Cell or tissue lysate, Other liquid samples
<b>Uniprot ID</b>	<b>D3Z7P3</b>
<b>Sensitivity</b>	9.375pg/ml
<b>Expiration Date</b>	Please enquire.



Mouse  
GLS(Glutaminase  
kidney isoform,  
mi...