

Product Datasheet

Rabbit anti-KLF4 Recombinant Monoclonal Antibody [BLR250L] (orb1710839)

Description	KLF4 Antibody
Species/Host	Rabbit
Reactivity	Human, Mouse
Conjugation	Unconjugated
Tested Applications	ICC, IHC, IP, WB
Immunogen	Between 75 and 125
Target	KLF4
Preservatives	Borate Buffered Saline (BBS) pH 8.2 with 0.09% Sodium Azide, rAlbumin-Free
Form/Appearance	Whole IgG
Concentration	1000 µg/ml
Storage	Shelf life: 1 year from date of receipt. Storage: 2 - 8°C
Note	For research use only
Application notes	Format: Whole IgG
Clonality	Recombinant
Uniprot ID	O43474
Dilution Range	WB: 1:1,000, IP: 6 µl/1 mg lysate, IHC: 1:100 to 1:500. Epitope retrieval with citrate buffer pH6.0 is recommended for FFPE tissue sections., ICC: 1:100 to 1:500. Epitope retrieval with citrate buffer pH6.0 is recommended for FFPE cell sections.

Biorbyt Ltd.

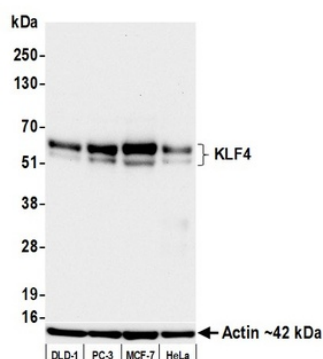
7 Signet Court, Swann's Road,
Cambridge, CB5 8LA, United Kingdom
Email: info@biorbyt.com, support@biorbyt.com
Phone: [+44 \(0\) 1223 859-353](tel:+44(0)1223859353) | Fax: [+1 \(415\) 651-8558](tel:+1(415)6518558)

Biorbyt LLC.

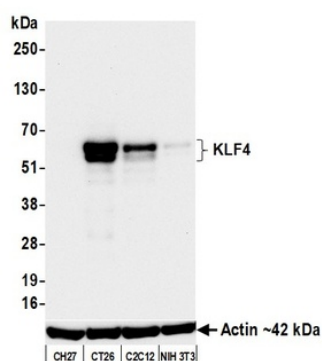
68 TW Alexander Drive,
Durham, NC, 27713, United States
Email: info@biorbyt.com, support@biorbyt.com
Phone: [+1 \(415\) 906-5211](tel:+1(415)9065211) | Fax: [+1 \(415\) 651-8558](tel:+1(415)6518558)

Expiration Date

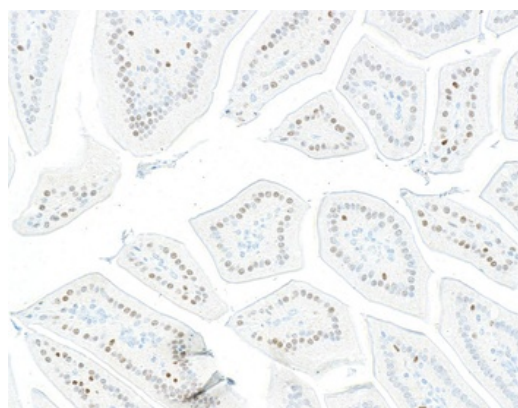
12 months from date of receipt.



Detection of human KLF4 by western blot. Samples: Whole cell lysate (25 μ g) from DLD-1, PC-3, MCF-7, and HeLa cells prepared using NETN lysis buffer. Antibody: Rabbit anti-KLF4 recombinant monoclonal antibody (orb1710839) used at 1:1000. Secondary: HRP-conjugated goat anti-rabbit IgG. Detection: Chemiluminescence with an exposure time of 30 seconds. Lower Panel: Rabbit anti-Actin recombinant monoclonal antibody.



Detection of mouse KLF4 by western blot. Samples: Whole cell lysate (25 μ g) from CH27, CT26, C2C12, and NIH 3T3 cells prepared using NETN lysis buffer. Antibody: Rabbit anti-KLF4 recombinant monoclonal antibody (orb1710839) used at 1:1000. Secondary: HRP-conjugated goat anti-rabbit IgG. Detection: Chemiluminescence with an exposure time of 30 seconds. Lower Panel: Rabbit anti-Actin recombinant monoclonal antibody.



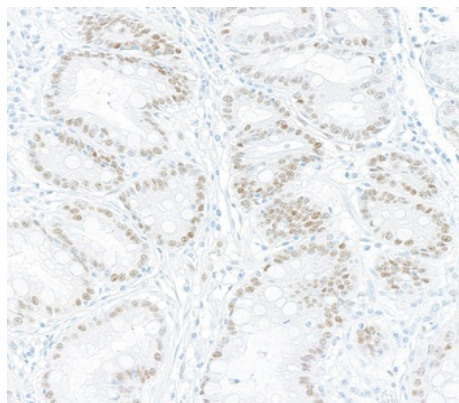
Detection of mouse KLF4 by immunohistochemistry. Sample: FFPE section of mouse gut. Antibody: Rabbit anti-KLF4 recombinant monoclonal antibody (orb1710839). Secondary: HRP-conjugated goat anti-rabbit IgG.

Biorbyt Ltd.

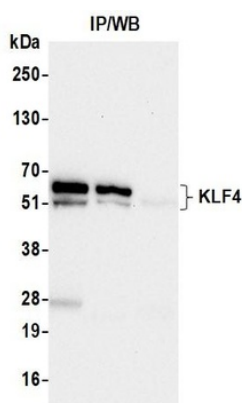
7 Signet Court, Swann's Road,
Cambridge, CB5 8LA, United Kingdom
Email: info@biorbyt.com, support@biorbyt.com
Phone: [+44 \(0\) 1223 859-353](tel:+44(0)1223859353) | Fax: [+1 \(415\) 651-8558](tel:+1(415)6518558)

Biorbyt LLC.

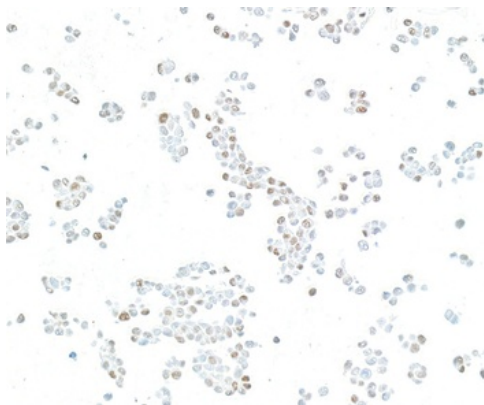
68 TW Alexander Drive,
Durham, NC, 27713, United States
Email: info@biorbyt.com, support@biorbyt.com
Phone: [+1 \(415\) 906-5211](tel:+1(415)9065211) | Fax: [+1 \(415\) 651-8558](tel:+1(415)6518558)



Detection of human KLF4 by immunohistochemistry. Sample: FFPE section of human gastric carcinoma. Antibody: Rabbit anti-KLF4 recombinant monoclonal antibody (orb1710839). Secondary: HRP-conjugated goat anti-rabbit IgG.



Detection of human KLF4 by western blot of immunoprecipitates. Samples: Whole cell lysate (1.0 mg per IP reaction; 20% of IP loaded) from MCF-7 cells prepared using NETN lysis buffer. Antibodies: Rabbit anti-KLF4 recombinant monoclonal antibody (orb1710839) used for IP at 6 μ l/mg lysate.



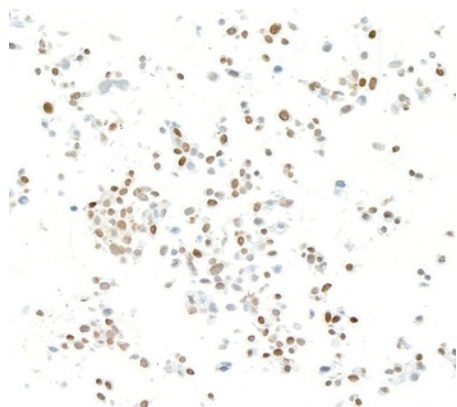
Detection of human KLF4 by immunocytochemistry. Sample: FFPE section of HCT 116 cells. Antibody: Rabbit anti-KLF4 recombinant monoclonal antibody (orb1710839). Secondary: HRP-conjugated goat anti-rabbit IgG.

Biorbyt Ltd.

7 Signet Court, Swann's Road,
Cambridge, CB5 8LA, United Kingdom
Email: info@biorbyt.com, support@biorbyt.com
Phone: [+44 \(0\) 1223 859-353](tel:+44(0)1223859353) | Fax: [+1 \(415\) 651-8558](tel:+1(415)6518558)

Biorbyt LLC.

68 TW Alexander Drive,
Durham, NC, 27713, United States
Email: info@biorbyt.com, support@biorbyt.com
Phone: [+1 \(415\) 906-5211](tel:+1(415)9065211) | Fax: [+1 \(415\) 651-8558](tel:+1(415)6518558)



Detection of mouse KLF4 by immunocytochemistry. Sample: FFPE section of CT26 cells. Antibody: Rabbit anti-KLF4 recombinant monoclonal antibody (orb1710839). Secondary: HRP-conjugated goat anti-rabbit IgG.

Biorbyt Ltd.

7 Signet Court, Swann's Road,
Cambridge, CB5 8LA, United Kingdom
Email: info@biorbyt.com, support@biorbyt.com
Phone: [+44 \(0\) 1223 859-353](tel:+44(0)1223859353) | Fax: [+1 \(415\) 651-8558](tel:+1(415)6518558)

Biorbyt LLC.

68 TW Alexander Drive,
Durham, NC, 27713, United States
Email: info@biorbyt.com, support@biorbyt.com
Phone: [+1 \(415\) 906-5211](tel:+1(415)9065211) | Fax: [+1 \(415\) 651-8558](tel:+1(415)6518558)