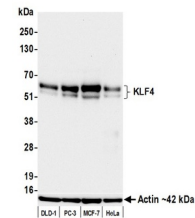


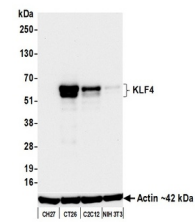
Product Datasheet

KLF4 Antibody (orb1710838)

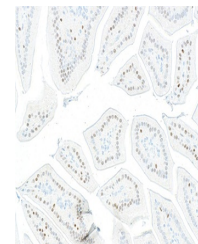
Description	KLF4 Antibody
Species/Host	Rabbit
Reactivity	Human, Mouse
Conjugation	Unconjugated
Tested Applications	ICC, IHC, IP, WB
Immunogen	Between 75 and 125
Target	KLF4
Preservatives	Borate Buffered Saline (BBS) pH 8.2 with 0.09% Sodium Azide, rAlbumin-Free
Form/Appearance	Whole IgG
Concentration	1000 µg/ml
Storage	Shelf life: 1 year from date of receipt. Storage: 2 - 8°C
Note	For research use only
Application notes	Format: Whole IgG
Clonality	Recombinant
Uniprot ID	O43474
Dilution Range	WB: 1:1,000, IP: 6 µl/1 mg lysate, IHC: 1:100 to 1:500. Epitope retrieval with citrate buffer pH6.0 is recommended for FFPE tissue sections., ICC: 1:100 to 1:500. Epitope retrieval with citrate buffer pH6.0 is recommended for FFPE cell sections.
Expiration Date	12 months from date of receipt.



Detection of human KLF4 by western blot....



Detection of mouse KLF4 by western blot....



Detection of mouse KLF4 by immunohistochem...