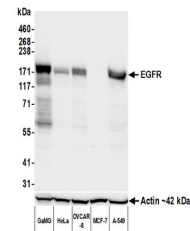


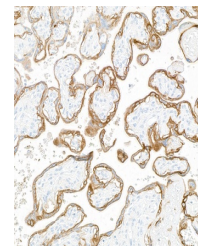
Product Datasheet

EGFR Antibody (orb1710837)

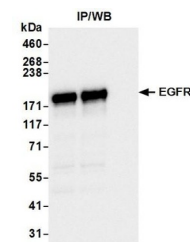
| | |
|----------------------------|---|
| Description | EGFR Antibody |
| Species/Host | Rabbit |
| Reactivity | Human |
| Conjugation | Unconjugated |
| Tested Applications | ICC, IHC, IP, WB |
| Immunogen | Between 1100 and 1150 |
| Target | EGFR |
| Preservatives | Borate Buffered Saline (BBS) pH 8.2 with 0.1% rAlbumin and 0.09% Sodium Azide |
| Form/Appearance | Whole IgG |
| Concentration | 200 µg/ml |
| Storage | Shelf life: 1 year from date of receipt. Storage: 2 - 8°C |
| Note | For research use only |
| Application notes | Format: Whole IgG |
| Clonality | Recombinant |
| Uniprot ID | P00533 |
| Dilution Range | WB: 1:1,000, IP: 20 µl/1 mg lysate, IHC: 1:100 to 1:500. Epitope retrieval with citrate buffer pH 6.0 is recommended for FFPE tissue sections., ICC: 1:100 to 1:500. Epitope retrieval with citrate buffer pH6.0 is recommended for FFPE cell sections. |
| Expiration Date | 12 months from date of receipt. |



Detection of human EGFR by western blot....



Detection of human EGFR by immunohistoch...



Detection of human EGFR by western blot ...