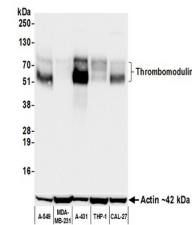


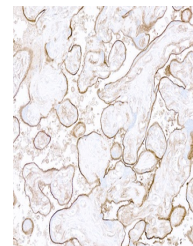
Product Datasheet

Thrombomodulin Antibody (orb1710832)

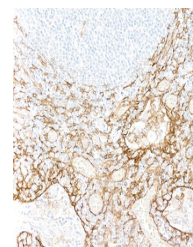
Description	Thrombomodulin Antibody
Species/Host	Rabbit
Reactivity	Human
Conjugation	Unconjugated
Tested Applications	FC, ICC, IHC, IP, WB
Immunogen	Residues 17-515 (ECD)
Target	Thrombomodulin
Preservatives	Borate Buffered Saline (BBS) pH 8.2 with 0.1% rAlbumin and 0.09% Sodium Azide
Form/Appearance	Whole IgG
Concentration	500 µg/ml
Storage	Shelf life: 1 year from date of receipt. Storage: 2 - 8°C
Note	For research use only
Application notes	Format: Whole IgG
Clonality	Recombinant
Uniprot ID	P07204
Dilution Range	WB: 1:1,000, IP: 12 µl/1 mg lysate, IHC: 1:100 to 1:500. Epitope retrieval with citrate buffer pH 6.0 is recommended for FFPE tissue sections., ICC: 1:100 to 1:500. Epitope retrieval with citrate buffer pH6.0 is recommended for FFPE cell sections.
Expiration Date	12 months from date of receipt.



Detection of human Thrombomodulin by wes...



Detection of human Thrombomodulin by imm...



Detection of human Thrombomodulin by imm...