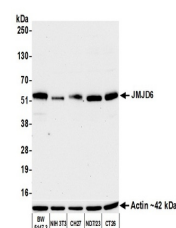


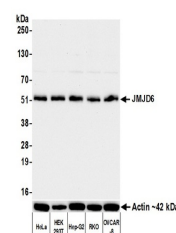
## Product Datasheet

### JMJD6 Antibody (orb1710831)

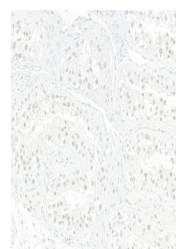
|                            |  |
|----------------------------|--|
| <b>Description</b>         | JMJD6 Antibody   |
| <b>Species/Host</b>        | Rabbit   |
| <b>Reactivity</b>          | Human, Mouse   |
| <b>Conjugation</b>         | Unconjugated   |
| <b>Tested Applications</b> | FC, ICC, IHC, WB   |
| <b>Immunogen</b>           | Between 125 and 175  |
| <b>Target</b>              | JMJD6  |
| <b>Preservatives</b>       | Borate Buffered Saline (BBS) pH 8.2 with 0.09% Sodium Azide, rAlbumin-Free   |
| <b>Form/Appearance</b>     | Whole IgG  |
| <b>Concentration</b>       | 1000 µg/ml   |
| <b>Storage</b>             | Shelf life: 1 year from date of receipt. Storage: 2 - 8°C  |
| <b>Note</b>                | For research use only  |
| <b>Application notes</b>   | Format: Whole IgG  |
| <b>Clonality</b>           | Recombinant  |
| <b>Uniprot ID</b>          | <a href="#">Q6NYC1</a>   |
| <b>Dilution Range</b>      | WB: 1:1,000, IHC: 1:100 to 1:500. Epitope retrieval with citrate buffer pH 6.0 is recommended for FFPE tissue sections., ICC: 1:100 to 1:500. Epitope retrieval with citrate buffer pH6.0 is recommended for FFPE cell sections. |
| <b>Expiration Date</b>     | 12 months from date of receipt.  |



Detection of mouse JMJD6 by western blot...



Detection of human JMJD6 by western blot...



Detection of human JMJD6 by immunohistoc...