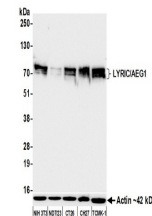


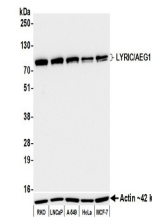
Product Datasheet

LYRIC/AEG1 Antibody (orb1710822)

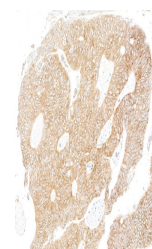
Description	LYRIC/AEG1 Antibody
Species/Host	Rabbit
Reactivity	Human, Mouse
Conjugation	Unconjugated
Tested Applications	FC, ICC, IHC, IP, WB
Immunogen	Between 475 and 525
Target	LYRIC/AEG1
Preservatives	Borate Buffered Saline (BBS) pH 8.2 with 0.1% rAlbumin and 0.09% Sodium Azide
Form/Appearance	Whole IgG
Concentration	250 µg/ml
Storage	Shelf life: 1 year from date of receipt. Storage: 2 - 8°C
Note	For research use only
Application notes	Format: Whole IgG
Clonality	Recombinant
Uniprot ID	Q86UE4
Dilution Range	WB: 1:1,000, IP: 20 µl/1 mg lysate, IHC: 1:50 to 1:500. Epitope retrieval with citrate buffer pH 6.0 is recommended for FFPE tissue sections., ICC: 1:50 to 1:500. Epitope retrieval with citrate buffer pH6.0 is recommended for FFPE cell sections.
Expiration Date	12 months from date of receipt.



Detection of mouse LYRIC/AEG1 by western...



Detection of human LYRIC/AEG1 by western...



Detection of human LYRIC/AEG1 by immunoh...