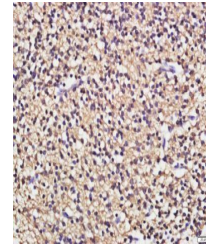


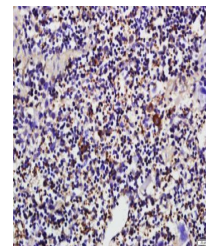
Product Datasheet

CD19 antibody (orb1699)

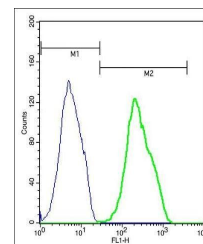
Description	CD19 antibody
Species/Host	Rabbit
Reactivity	Human, Mouse
Conjugation	Unconjugated
Tested Applications	FC
Immunogen	KLH conjugated synthetic peptide derived from human CD19 (151-250/556 aa)
Target	CD19
Preservatives	0.01M TBS(pH7.4) with 1% rAlbumin, 0.03% Proclin300 and 50% Glycerol.
Form/Appearance	Liquid
Concentration	1mg/ml
Storage	Shipped at 4°C. Store at -20 °C for one year. Avoid repeated freeze/thaw cycles.
Note	For research use only
Isotype	IgG
Clonality	Polyclonal
MW	59 kDa
Uniprot ID	P15391
Dilution Range	Flow-Cyt=1µg /Test
Expiration Date	12 months from date of receipt.



Immunohistochemical staining of mouse spleen



Immunohistochemical staining of mouse spleen



Flow cytometric analysis of Mouse Spleen