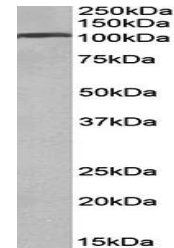


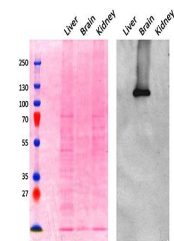
Product Datasheet

AP2A1 antibody (orb167689)

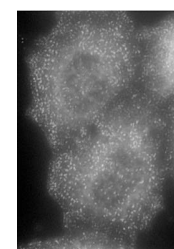
Description	Goat polyclonal antibody to AP2A1.
Species/Host	Goat
Reactivity	Bovine, Human, Mouse, Porcine, Rat
Conjugation	Unconjugated
Tested Applications	ELISA, WB
Target	AP2A1 (aa706-727)
Preservatives	Supplied at 0.5 mg/ml in Tris saline, 0.02% sodium azide, pH7.3 with 0.5% bovine serum albumin.
Storage	Aliquot and store at -20°C. Minimize freezing and thawing.
Note	For research use only
Application notes	WB: Approx 110kDa band observed in Human Brain (Frontal cortex) lysates (calculated MW of 108kDa according to NP_055018.2). Recommended concentration: 0.03-0.1µg/ml. Primary incubation was 1 hour.
Protein Sequence	ELEPPAPESPMALLADPAPAAD
Clonality	Polyclonal
MW	108; 105
Entrez	160
Dilution Range	ELISA: 1:128000, WB: 0.03-0.1 µg/ml
Expiration Date	12 months from date of receipt.



Western blot analysis of Human Frontal Cortex lysates.



Western blot analysis of Mouse Brain lysates.



Western blot analysis of HeLa cells using immunoprecipitation.