

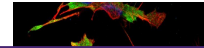
---

## Product Datasheet

### LAR Antibody (orb167652)

**Description**

Mouse Anti-Human LAR/PTPRF Monoclonal IgG2a


**Species/Host**

Mouse

**Reactivity**

Human, Mouse, Rat

**Conjugation**

Unconjugated

**Tested Applications**

ICC, WB

**Immunogen**

Fusion protein amino acids 1315-1607 (cytoplasmic C-terminus) of human LAR. 97% identical in both rat and mouse. > 80% identity with PTPRD and PTPRS. > 50% identity with PTPRM and PTPRK.

**Target**

LAR

**Preservatives**

PBS pH 7.4, 50% glycerol, 0.1% sodium azide  
\*Storage buffer may change when conjugated

**Concentration**

1 mg/ml

**Storage**

-20°C

**Note**

For research use only

**Application notes**

1 µg/ml of SMC-443 was sufficient for detection of LAR/PTPRF in 20 µg of rat brain lysate by colorimetric immunoblot analysis using Goat anti-mouse IgG:HRP as the secondary antibody.

**Isotype**

IgG2a

**Clonality**

Monoclonal

**MW**

85kDa

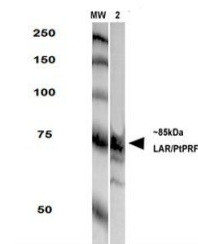
**Uniprot ID**
[P10586](#)
**NCBI**
[NP\\_002831.2](#)
**Entrez**
[5792](#)
**Dilution Range**

WB (1:1000)

**Expiration Date**

12 months from date of receipt.

Immunofluorescence analysis of neuroblas...



Western Blot analysis of rat brain membr...