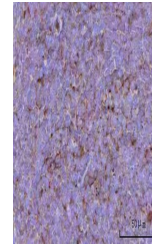


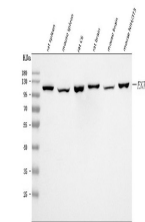
Product Datasheet

CD39/Entpd1 Antibody (orb1676375)

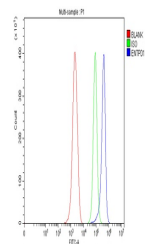
Description	CD39/Entpd1 Antibody
Species/Host	Rabbit
Reactivity	Mouse, Rat
Conjugation	Unconjugated
Tested Applications	ELISA, FC, IHC, WB
Immunogen	E.coli-derived mouse CD39/Entpd1 recombinant protein (Position: Q39-S475).
Form/Appearance	Lyophilized
Concentration	Adding 0.2 ml of distilled water will yield a concentration of 500 µg/ml.
Storage	At -20°C for one year from date of receipt. After reconstitution, at 4°C for one month. It can also be aliquotted and stored frozen at -20°C for six months. Avoid repeated freezing and thawing.
Note	For research use only
Application notes	Tested Species: In-house tested species with positive results. Other applications have not been tested. Optimal dilutions should be determined by end users. Adding 0.2 ml of distilled water will yield a concentration of 500 µg/ml.
Clonality	Polyclonal
MW	100 kDa
Uniprot ID	P55772
Expiration Date	12 months from date of receipt.



IHC analysis of CD39/Entpd1 using anti-CD39/Entpd1 antibody.



Western blot analysis of CD39/Entpd1 using anti-CD39/Entpd1 antibody.



Flow Cytometry analysis of ANA-1 cells using anti-CD39/Entpd1 antibody.