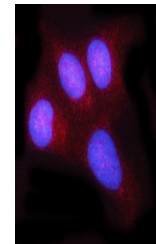


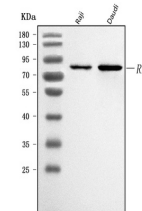
Product Datasheet

c-Rel/REL Antibody (orb1676371)

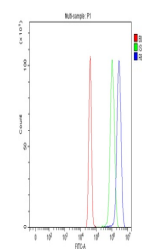
Description	c-Rel/REL Antibody
Species/Host	Rabbit
Reactivity	Human
Conjugation	Unconjugated
Tested Applications	ELISA, FC, ICC, IF, WB
Immunogen	E.coli-derived human c-Rel/REL recombinant protein (Position: K116-D610).
Form/Appearance	Lyophilized
Concentration	Adding 0.2 ml of distilled water will yield a concentration of 500 µg/ml.
Storage	At -20°C for one year from date of receipt. After reconstitution, at 4°C for one month. It can also be aliquotted and stored frozen at -20°C for six months. Avoid repeated freezing and thawing.
Note	For research use only
Application notes	Tested Species: In-house tested species with positive results. Other applications have not been tested. Optimal dilutions should be determined by end users. Adding 0.2 ml of distilled water will yield a concentration of 500 µg/ml.
Isotype	Rabbit IgG
Clonality	Polyclonal
MW	78 kDa
Uniprot ID	Q04864
Expiration Date	12 months from date of receipt.



IF analysis of c-Rel/REL using anti-c-Rel...



Western blot analysis of c-Rel/REL using...



Flow Cytometry analysis of U251 cells us...